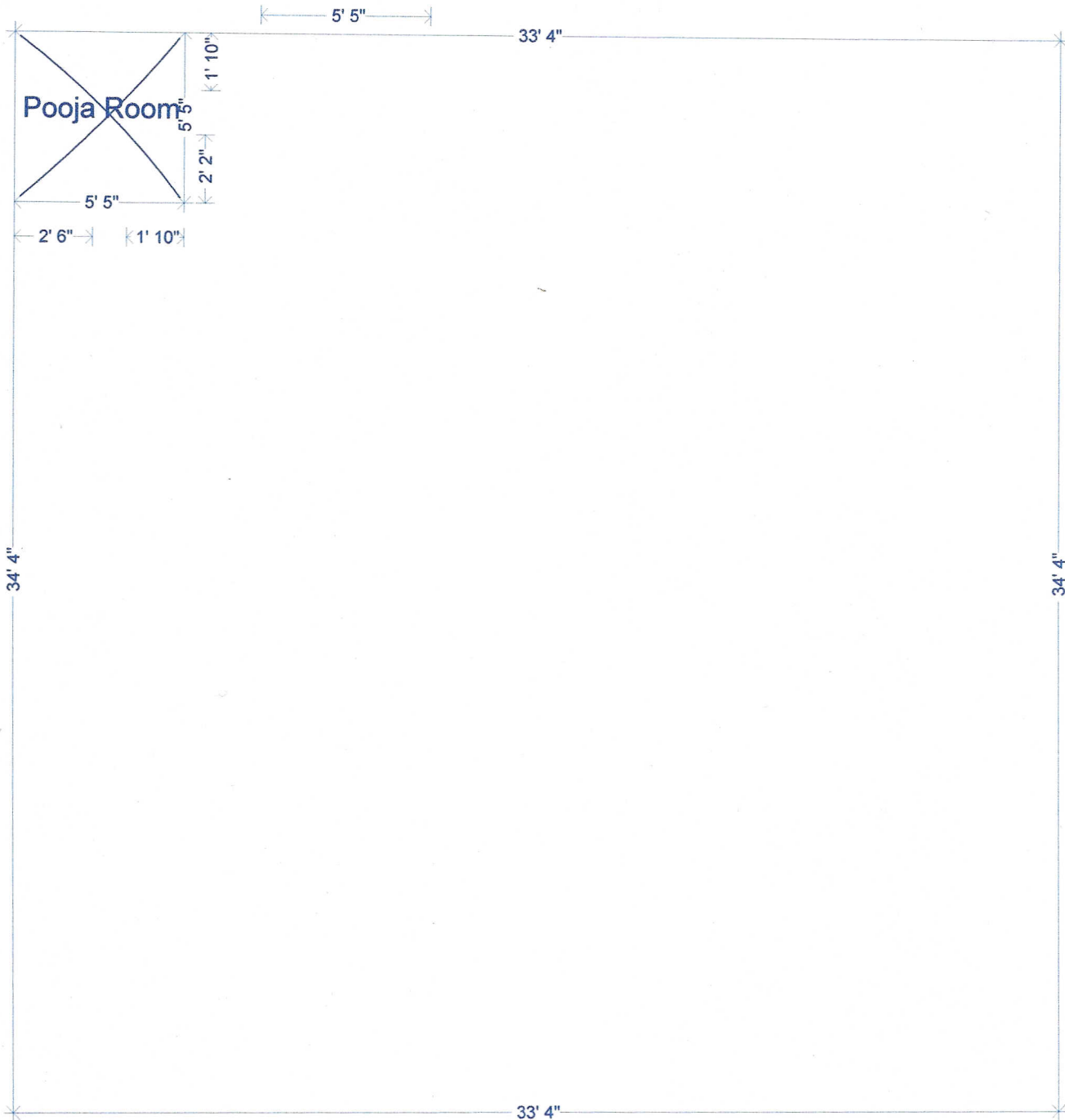


A 5.5 x 6 feet Floor Window



1. To Determine the positive half of West the centre of the Pooja room is determined.
2. For locating the Door to Pooja room from West, the positive half is determined by gradation method. you could leave a space of 2.5 ft from left and 1.10 ft from right for a West facing door
3. For locating the door to Pooja room from South again the positive half is determined by gradation method. You could leave a space of about 2.2 feet from left and 1.10 feet from right for a South facing door.